

**COMPLIES WITH US-CANADA POLE REQUIREMENTS**  
**CSA C22.2 No. 250.0-04 / UL 1598 "CLAUSE 10.3"**  
**CSA C22.2 No. 206-M1987**

CSA 250 Clause 10.3.5A / 10.3.5B / 10.3.7  
 HAND HOLE W/ COVER = STANDARD 3" x 5" SPLICE COMPARTMENT WITH GROUNDING MEANS.

CSA 250 Clause 10.3.5C  
 TENON OR DRILLED LUMINAIRE BONDING MEANS IN ACCORDANCE WITH CLAUSE 6.14.3

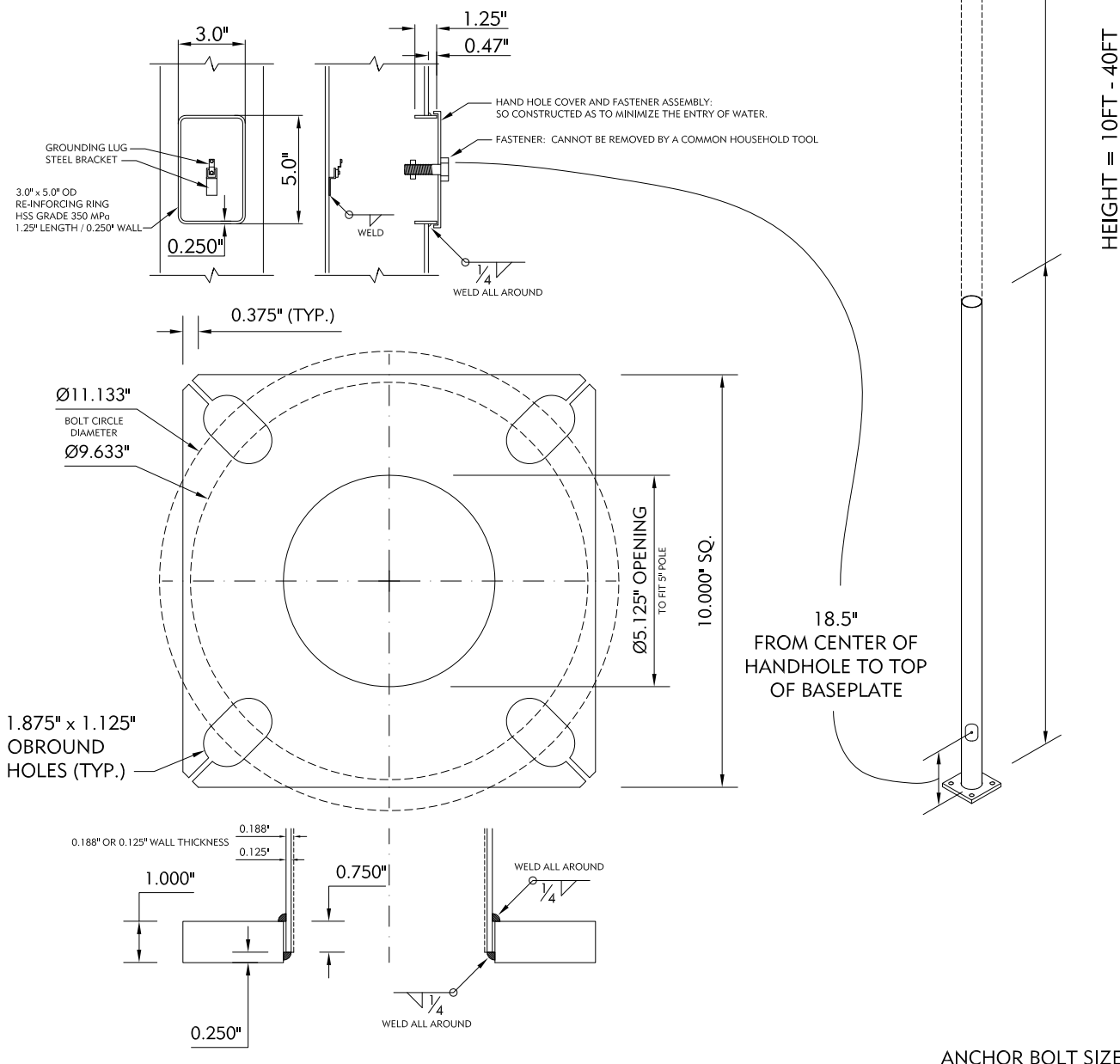
CSA 250 Clause 10.3.8 / CSA 206 Clause 3.5.1  
 SUPPLY CONNECTION LOCATED AT 18" FROM THE LOWER END OF THE METAL RACEWAY.

CSA 206 Clause 3.3  
 CONDUCTOR SUPPORTS INSTALLED IN ACCORDANCE WITH TABLE 1 OF CLAUSE 3.3

CSA 250 Clause 10.3.5C  
 LUMINAIRE BONDING MEANS IN ACCORDANCE WITH CLAUSE 6.14.3

CSA 250 Clause 10.3.10  
 RATED FOR WET LOCATION IN ACCORDANCE WITH CLAUSE 13.4

CSA 206 Clause 3.6.1  
 PROTECTED AGAINST RUSTING IN ACCORDANCE WITH CSA STANDARD C22.2 No. 0.



ANCHOR BOLT SIZE = 1" x 36"



PRODUCT CODE

RSSP-5"

DESCRIPTION

ROUND STRAIGHT STEEL POLE - 5"