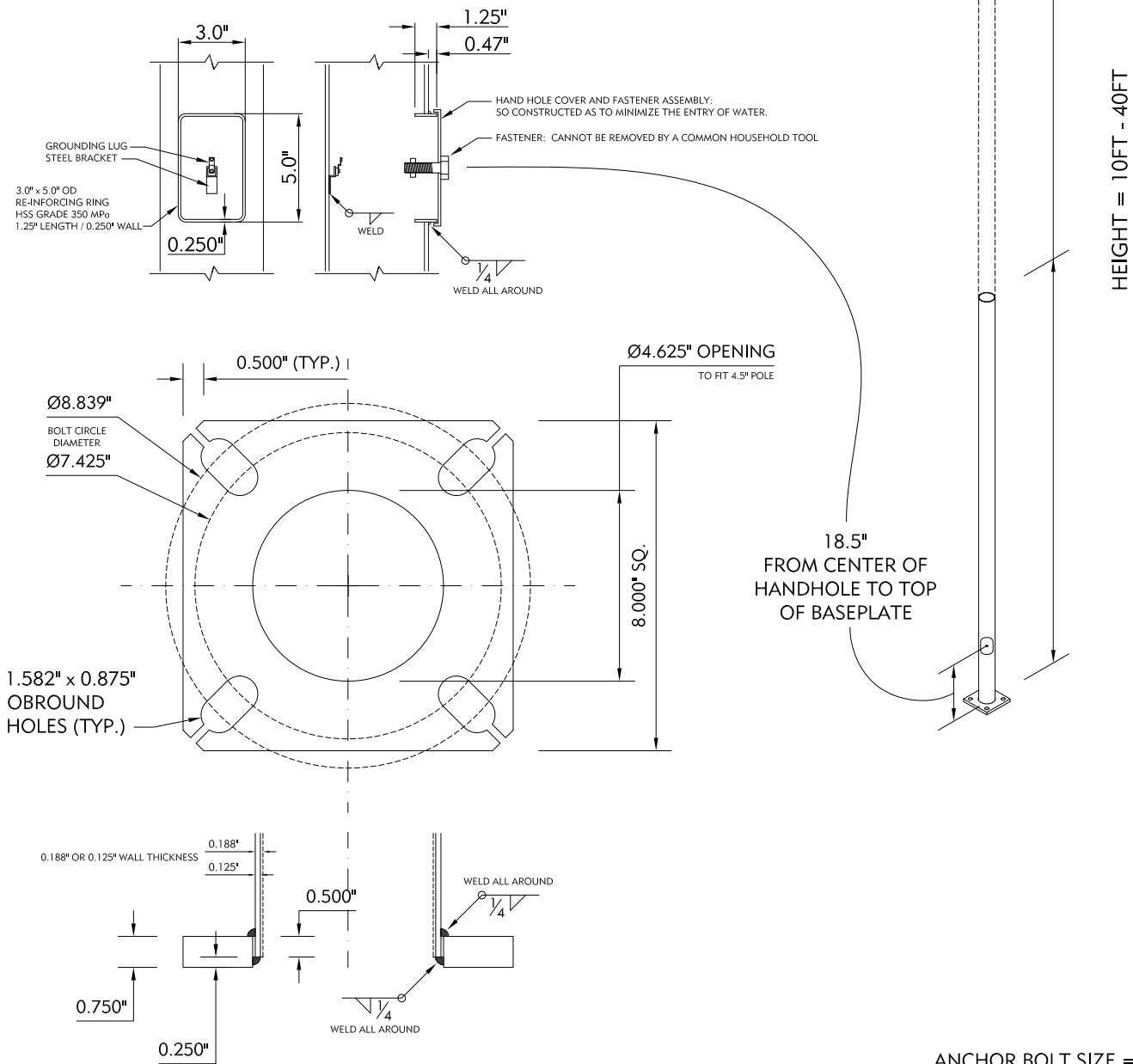


COMPLIES WITH US-CANADA POLE REQUIREMENTS
CSA C22.2 No. 250.0-04 / UL 1598 "CLAUSE 10.3"
CSA C22.2 No. 206-M1987

- CSA 250 Clause 10.3.5A / 10.3.5B / 10.3.7
HAND HOLE W/ COVER = STANDARD 3" x 5" SPLICE COMPARTMENT WITH GROUNDING MEANS.
- CSA 250 Clause 10.3.5C
TENON OR DRILLED LUMINAIRE BONDING MEANS IN ACCORDANCE WITH CLAUSE 6.14.3
- CSA 250 Clause 10.3.8 / CSA 206 Clause 3.5.1
SUPPLY CONNECTION LOCATED AT 18" FROM THE LOWER END OF THE METAL RACEWAY.
- CSA 206 Clause 3.3
CONDUCTOR SUPPORTS INSTALLED IN ACCORDANCE WITH TABLE 1 OF CLAUSE 3.3
- CSA 250 Clause 10.3.5C
LUMINAIRE BONDING MEANS IN ACCORDANCE WITH CLAUSE 6.14.3
- CSA 250 Clause 10.3.10
RATED FOR WET LOCATION IN ACCORDANCE WITH CLAUSE 13.4
- CSA 206 Clause 3.6.1
PROTECTED AGAINST RUSTING IN ACCORDANCE WITH CSA STANDARD C22.2 No. 0.



PRODUCT CODE

RSSP-4.5"

DESCRIPTION

ROUND STRAIGHT STEEL POLE - 4.5"